

LED displays

FHD 1080p

UHD 4K

Custom sizes/resolutions





Make a big impression with an Optoma LED display

Optoma is a one-stop LED display solution provider with its range of Full HD 1080p, UHD 4K and custom size and resolution LED displays.

The ultra-thin, 16:9 native aspect ratio LED displays blend discretely into any corporate, higher education, hospitality and digital signage environment.

Easy to install, operate and maintain, they are designed for ultimate reliability and superior image quality.

Why choose Optoma LED displays?

- High brightness, high-resolution, indoor Full HD and 4K UHD LED displays
- Easy installation and maintenance - surface mount and front access
- Ultra-thin 56mm panel depth - discreet, space-saving design
- Best-in-class processing and switching - HQUltra technology
- Ultimate reliability – for peace of mind
- European-wide logistics and local support



Ultra-thin

With an ultra-thin panel depth of only 56mm, Optoma LED displays are designed to take up less space, blending discretely into any environment. The unobtrusive displays are perfect for contemporary corporate or education environments and space saving in retail or signage applications.



Fully supported

Designed, supplied and supported as a single solution, Optoma LED displays include everything you need – from cables to preconfigured processors. This ensures a hassle-free set-up for a truly seamless installation.



Easy installation and maintenance

They can be mounted directly onto a suitable wall* without a mounting frame. A simple, lightweight frame option is also available. Front access gives fast, low-cost installation and easy maintenance.



Reliability

Designed and built for outstanding reliability, Optoma's LED displays combine superior image processing technologies with exceptional engineering and premium quality components to provide ultimate peace of mind.

Specify the size and resolution to fit your application with our custom design service.

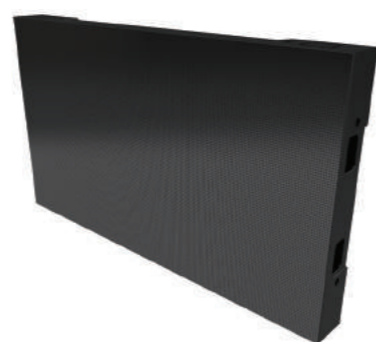
*Contact Optoma for details.

LED displays

Displays	FHD153169	FHD20422	FHD26528	UHD156338	UHD20845	UHD261056
Display resolution	FHD 1080P	FHD 1080P	FHD 1080P	UHD 4K	UHD 4K	UHD 4K
Display size	3 x 1.69 m (136" diagonal)	4 x 2.2 m (180" diagonal)	5 x 2.8 m (226" diagonal)	6 x 3.38 (271" diagonal)	8 x 4.5 m (361" diagonal)	10 x 5.6 m (452" diagonal)
Pixel pitch (H x V)	1.5 mm	2.0 mm	2.6 mm	1.5 mm	2.0 mm	2.6 mm
Minimum viewing distance	1.5 m	2.0 m	2.6 m	1.5 m	2.0 m	2.6 m
Contrast	4000:1					
Panel depth	56 mm					
Standard panel weight	4.3 kg					
LED fixings	Front access					
Operating temperature range	-10 - +50 °C					
Refresh rate	>1,920 Hz					
Brightness (before calibration)	1,000 nits					
Brightness (after calibration)	900 nits					
Lifespan	>100,000 hours					
Mounting frame	Optional					
Included components						
Scaler-switcher	Optoma LS200T					
Sender	Optoma MCTRL660			Optoma CTRL4K		

LED panels for custom display sizes

Optoma LED panels enable custom sizes for unique display solutions. The ultra-thin panel depth and lightweight design offers more flexibility for indoor applications where image quality matters.



LED panels

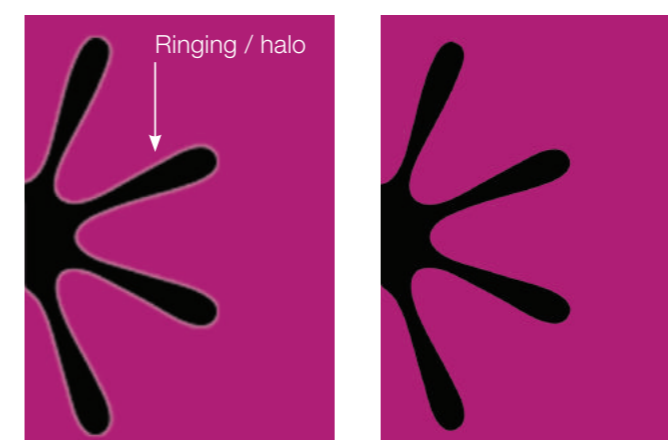
Panels	THD1560	THD2080	THD2600	THD3125	THD3910
Pixel pitch (H x V)	1.5mm	2.0 mm	2.6 mm	3.1 mm	3.9 mm
Pixel resolution (width)	320 pixels/panel	240 pixels/panel	192 pixels/panel	160 pixels/panel	128 pixels/panel
Pixel resolution (height)	180 pixels/panel	135 pixels/panel	108 pixels/panel	90 pixels/panel	72 pixels/panel
Panel width	500 mm				
Panel height	281.25 mm				
Panel depth	56 mm				
Panel weight	4.3 kg				
Maintenance access	Front				
Refresh rate	>1,920 Hz				
Brightness (after calibration)	900 nits	900 nits	900 nits	1300 nits	1000 nits
Contrast ratio	4000:1				
Lifespan	>100,000 hours				
Mounting frame	Optional				

LED display scaling and switching

Optoma LED scaler-switchers are designed for use with our LED displays.

HQUltra technology was chosen to power the large displays used at the recent Rio Olympics. The same technology powers the Optoma range of LED scaler-switchers.

HQUltra 4K image processing delivers best in class picture quality and low latency video processing. Inputs can be switched seamlessly in as little as 0.25 seconds. The same processor can drive loudspeakers in meeting rooms and smaller conference rooms, plus line level balanced stereo outputs to drive an external amplifier or powered loudspeakers.



LS200



LS200T



LS300T



Model	LS200	LS200T	LS300T
HDMI 4K inputs	•(2)	•(2)	•(2)
HDMI HD input	•	•	•
DVI/HDMI HD input	•	•	•
HDBaseT 4K input	-	•	•
DisplayPort 4K input	•	•	•
Component input	DVI-U	DVI-U	DVI-U
Composite input	•	•	•
VGA Analog input	•	•	•
3G-SDI input(s)	-	-	•(2)
Streaming video input (via network port)	•	•	•
Analogue audio input and outputs	•	•	•
Power amp 2 x 15W (RMS)	•	•	•
DVI / HDMI HD output	•	•	•
HDMI 4K output	•	•	•
HDBaseT 4K output	-	•	•
3G-SDI output	-	-	•
3G-SDI audio embed/de-embed and SPDIF	-	-	•
HQUltra 4K low-latency processing	•	•	•
HQUltraFast high speed input switching	•	•	•
Picture in Picture (PiP)	-	-	•
TCP/IP webserver and API control	•	•	•
Genlock – H and V or crosslock	-	-	•
Pan, zoom, tilt	•	•	•
LED display scaling	•	•	•
LED display splicing	•	•	•



ProDesign

Professional services

At Optoma, we benchmark our success on the outcome of our customers' projects, not the products sold that feature in them. Our dedicated in-house technical services team offer total system support for all projector and LED display project requirements for AV newcomers and technology veterans alike.

High performance professional installations invariably require detailed technical support. Our experienced engineers are available to assist from the initial design and planning, right through to commissioning and beyond.



Consultation and technical advice

Consultative services

- ✓ Design assistance
- ✓ Product and application advisory
- ✓ Content specification

Technical documentation

- ✓ Technical drawings
- ✓ Datasheets
- ✓ Software



Training and support

Remote support

- ✓ Direct line helpdesk
- ✓ Remote system diagnosis with secure connection
- ✓ Email direct

On site commissioning

- ✓ Optoma product setup
- ✓ Servicing



Calculations, surveys and engineering drawings

Calculations

- ✓ Custom LED display size and resolution designs
- ✓ Total cost of ownership

Site surveys

- ✓ Project site survey
- ✓ Onsite product demonstrations
- ✓ Shootouts

Technical documentation

- ✓ Custom LED display size and resolution designs



Local support

Authorised service providers in more than 100 countries!

Optoma's commitment to delivering unparalleled customer service is reflected in its global presence of authorised service providers.

ProDesign

Some services are chargeable.

Enquire now: prodesign@optoma.eu

